

---

## Read through *Historical Records· Biography of General Li* for an Overview of 'Mo Fu' of The Han Dynasty

Yang Hong

The article Chinese appears from page 004 to 020.

**ABSTRACT:** Li Guang, a renowned general who fought against Xiongnu in the Western-Han dynasty, ended his life by suicide in his 'Mo Fu'. The term of 'Mo Fu' or 'Mu Fu' refers to the office section of the generals in the border garrisons of the Han Dynasty. This thesis focuses on the architectural layout of 'Mo Fu' through the *Historical Records· Biography of General Li* (Shi Ji · Li Jiangjun Liezhuan) and the murals of the Eastern-Han grave chamber in Horinger County, Inner Mongolia for a general picture of the 'Mu Fu' of Guard Lieutenant Huwuhuan, called Hùwūhuán Xiàowèi in Chinese pinyin, equal to Military Commander of the border army. The arrangement of terracotta sculptures consisting of chariots and horses and figurines unearthed in the Western-Han burial pit in Shanwangcun village, Shandong province in 2007 is much close to the illustrated mural of the Eastern-Han tomb chamber in Horinger County, Inner Mongolia, it is therefore studied to be the model of 'Mo Fu' dating from the Western-Han dynasty.

**KEYWORDS:** Li Guang; 'Mo Fu'; tomb of the Han dynasty; mural; model



---

## 'A Nomadic Hat with Broad Brim Design': A Type of Jurchen Hat Going in and out of Fashion along with The Changes of The Ethnicity and Culture

Zhang Jia

The article Chinese appears from page 021 to 039.

**ABSTRACT:** A type of nomadic hat with broad brim design prevailing in the Yuan dynasty, called Shēn Yán Hú Mào in Chinese pinyin, specifically mentioned in the *Prohibition of Hu Clothing* imperially ordered in the 1<sup>st</sup> year of Emperor Hongwu (洪武) of the Ming dynasty, was originally worn by the Jurchen people of the Jin dynasty who used to call it 'Màn Lì' or 'Fāng Lì' and 'Sì Jiǎo Lì Zì' before it took popularity among the Mongolian and the people of all classes over Korea, central Asia and Persia areas. However, with the change from the Yuan to the Ming dynasty it got gradually ignored as the symbol of the Hu culture in the eyes of the Confucian scholar-bureaucrat of the Ming dynasty and Korea. Since it is always confused with the type of hat of the Ming dynasty, it is significant to track back the history by design and image materials to work out the puzzling problems. The 'Màn Lì' hat going in and out of fashion in the East Asia was accompanied with the rise and down of the 'Mongolian Wind' and the ebb and flow of the Thought of Yi-Xia among the Confucian intellectuals over the East Asia.

**KEYWORDS:** 'Màn Lì'; a corrugated cap; the Yuan Dynasty; Distinction between Yi and Xia

---

## A Tentative Completion of The Missing Text in ‘Xiao Chen Qiang’ Oracle-Bone Inscription

Fang Zhisong

**ABSTRACT:** A tentative completion of the missing parts of the oracle bone inscription on ‘Xiao Chen Qiang’ follows the three bases: 1. The order by which the captures are sacrificed in the offering ceremony in the Shang and Zhou Dynasties (BC1600-BC221). 2. The interpretation of several key characters such as 比 in the inscriptions. 3. The comparative analysis between the war inscriptions involved. Included with the incomplete characters, there are less than 90 characters of the total in the oracle bone inscriptions on ‘Xiao Chen Qiang’.

**KEYWORDS:** oracle bone inscriptions on ‘Xiao Chen Qiang’; ceremony of sacrificing captures; case study of oracle-bone scripts; completion of the missing inscribed oracle-bone text

*The article Chinese appears from page 040 to 048.*

---

## Types and Periods of The ‘Brick Hollow Watchtower’ on The Great Wall of The Ming Dynasty ---- Cases Study of The Watchtowers in Jizhou and Zhenbao Military Towns

Zhang Yimeng

**ABSTRACT:** The thesis bases on historical records to explore the 1,083 brick hollow watchtower sites which were built as forts standing above the Ming Great Wall within the garrison posts of Jizhou and Zhenbao for their types and periods by archaeological typology, followed by the conclusion that they have three types divided into 17 modes by internal structure. The watchtowers of the two places are of different feature. Specifically, the watchtower in Jizhou is constructed with three rooms with three parallel corridors inside, whereas the watchtower in Zhenbao with a central room surrounded by a cloister outside. In addition, the discovered chronological inscription on the tablet of the Ming Great Wall and the Ming documents suggest the brick hollow watchtowers be periodized into three.

**KEYWORDS:** the Ming Great Wall; hollow watchtower; typology; garrison posts of Jizhou and Zhenbao

*The article Chinese appears from page 049 to 061.*

---

## Zhang Juzheng’s Reformation Reviewed from The Court Finance of The Early Wanli Reign

Wang Huiming

**ABSTRACT:** It is always agreed among the historians that Zhang Juzheng reformation to a certain degree saved the late Ming Court from crisis by reducing spending of the imperial court as part of the fiscal reform strategies. As is recorded in *Memoir of Ming Shenzong* (Míng Shénzōng Shílù), Zhang Juzheng’s reform started from the year when Ming Shenzong (神宗) ascended the throne and ended in the 14<sup>th</sup> year of Emperor Wanli’s (万历) reign, during which he implemented a series of reform measures and was blamed for his deeds after his death. Viewed from the imperial court finance, Zhang’s reform failed to cut down the expenses of the imperial court or cultivate Ming Shenzong (神宗) with virtue of frugality. What’s worse, the imperial finance inflated more seriously exceeding any period than ever after Zhang Juzheng passed away.

**KEYWORDS:** Emperor Shenzong (神宗) of the Ming Dynasty; Zhang Juzheng reformation; the early Wanli’s (万历) reign; the imperial court finance

*The article Chinese appears from page 062 to 074.*

---

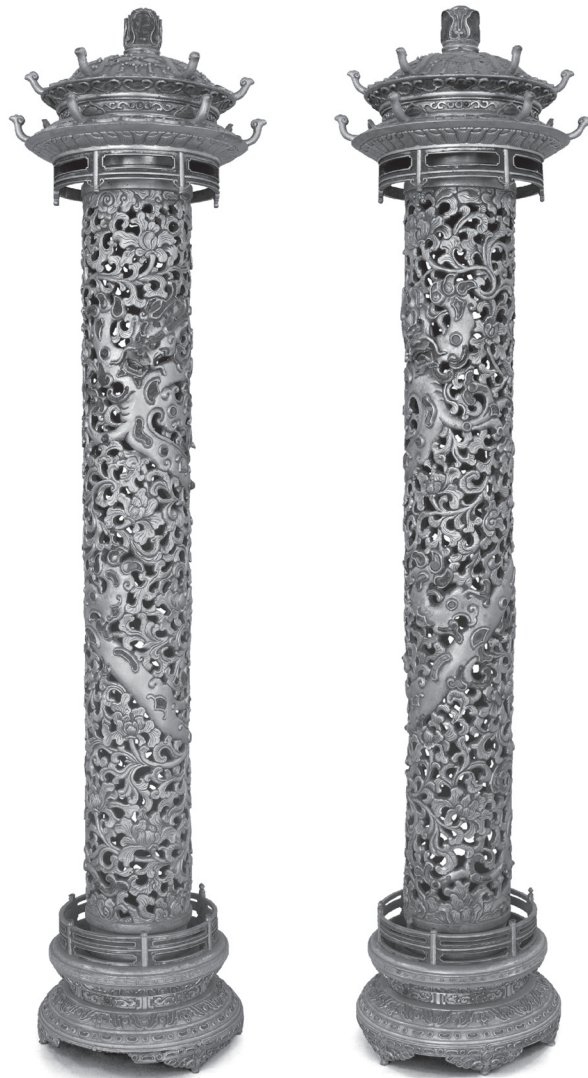
## Chui'en Incense and Chui'en Censer of The Qing Court

Wan Xiufeng

*The article Chinese appears  
from page 075 to 085.*

**ABSTRACT:** Both Chui'en incense and the tube-shaped incense burner called Chui'en Censer in short, appeared in the court of Emperor Yongzheng (雍正) reign of the Qing dynasty. The name of Chui'en incense granted by Emperor Yongzheng (雍正) derived from Longgua incense of the Ming Dynasty, whereas the 'Chui'en Censer' is featured by the tube-shape design right for burning Chui'en incense hanging upside down inside. 'Chui'en Incense' equipped with its censer burner was usually placed as one of the important furnishings in the halls and living rooms of the Qing Palace, it played an important role in the incense culture of the Qing Dynasty.

**KEYWORDS:** imperial court; Chui'en incense; Chui'en Censer



---

## Emperor Qianlong and Decorated Seal Script

Yao Ling

**ABSTRACT:** ‘Decorated Seal Script’ mentioned in the thesis is generally called Zátǐ Zhuàn in Chinese pinyin, which refers to any of varied seal scripts with decorative characters. ‘Decorated Seal Script’ originated in Pre-Qin times, kept active in the Qin and Han Dynasties, and flourished in the Northern and Southern dynasties. It didn’t draw much attention from the literati class in a long period that came later for its excessive decoration and many forge legends depicting its origin. However, Emperor Qianlong (乾隆) was very much fond of such a type of seal script in his early period which was considered as a part of the Han culture in his eyes, he therefore created Manchu decorated seal script as a manner to achieve his ambition of establishing new ritual system and consolidating Manchu’s domination. Nevertheless, with his knowledge and attainments promoting, Emperor Qianlong (乾隆) gradually changed his attitude towards decorated seal script in his later years. This essay discusses four aspects: Emperor Qianlong’s (乾隆) initial interest, uses and attitude to decorated seal script in his early period; Emperor Qianlong (乾隆) changed his view towards decorated seal script in his middle to later period years of life; What made him change the understanding of decorated seal script; Fourthly, how much the ‘Decorated Seal Script’ got developed throughout Emperor Qianlong’s (乾隆) period.

*The article Chinese appears from page 086 to 098.*

**KEYWORDS:** decorated seal script (Zátǐ Zhuàn); Emperor Qianlong; the Qing Dynasty

---

## The Implication of ‘Reminiscence of Pines’ Landscape by Dai Xi

Cong Tao

**ABSTRACT:** Dai Xi in 1847 depicted the hometown of Senior Military Official Qi Junzhao in his ‘Reminiscence of Pines’ (Yì Sōng Tú in Chinese pinyin), a traditional Chinese landscape painting. He created the picture by his fancy instead of personal experience. His gloomy feeling was expressed through the annotations. Combining historical details with Dai Xi’s status as artist, scholar and government official throughout his life career, the thesis analyzes the interconnectivity reflected in the composition of ‘Reminiscence of Pines’ and the relationship between the imperial court officials’ factional conflicts during the Opium War and Confucianism during the late Qing Dynasty.

*The article Chinese appears from page 099 to 107.*

**KEYWORDS:** Dai Xi; the landscape of ‘Reminiscence of Pines’(Yì Sōng Tú); the implication of a painting; Muzhanga; factional conflict



# Contents

Palace Museum Journal

NO.2, 2019 vol.202

- |     |   |     |  |
|-----|---|-----|--|
| 004 | <b>Read through <i>Historical Records · Biography of General Li</i> for an Overview of ‘Mo Fu’ of The Han Dynasty</b><br><i>Yang Hong</i>   | 062 | <b>Zhang Juzheng’s Reformation Reviewed from The Court Finance of The Early Wanli Reign</b><br><i>Wang Huiming</i> |
| 021 | <b>‘A Nomadic Hat with Broad Brim Design’: A Type of Jurchen Hat Going in and out of Fashion along with The Changes of The Ethnicity and Culture</b><br><i>Zhang Jia</i>                        | 075 | <b>Chui’en Incense and Chui’en Censer of The Qing Court</b><br><i>Wan Xiufeng</i>                                  |
| 040 | <b>A Tentative Completion of The Missing Text in ‘Xiao Chen Qiang’ Oracle-Bone Inscription</b><br><i>Fang Zhisong</i>   | 086 | <b>Emperor Qianlong and Decorated Seal Script</b><br><i>Yao Ling</i>   |
| 049 | <b>Types and Periods of The ‘Brick Hollow Watchtower’ on The Great Wall of The Ming Dynasty ---- Cases Study of The Watchtowers in Jizhou and Zhenbao Military Posts</b><br><i>Zhang Yimeng</i> | 099 | <b>The Implication of ‘<i>Reminiscence of Pines</i>’ Landscape by Dai Xi</b><br><i>Cong Tao</i>                    |